

# DUSTAWAY AUTO SHAKE FILTER UNITS

HIGH EFFICIENCY DUST COLLECTION UNITS DESIGNED TO SUIT YOUR EXACT REQUIREMENTS



The Sangre dustaway series of dust extraction units are complete automatic dust collectors each contained within a single cabinet. They contain all the basic requirements of fan, filter, hopper, bin, auto shake as standard. These units have been designed with maximum efficiency and durability as prime considerations. By variation of filter fabric and disposal method each unit becomes tailored to the needs of the specific application so that an answer to your dust problem can probably be found within the dustaway range.

Maintenance is carried out from the clean side of the filter media.

Dust laden air enters the unit through an inlet spigot located directly above the dust collecting bin. Large particles drop into the bin as the air enters the unit due to drop in air speed and to the sudden change in flow direction. The air is drawn upwards through the filter bags where the fine particles are collected. Finally clean air is drawn into the fan and then discharged to atmosphere.

The fine dust deposited on the inside of the bag is dislodged after shut down of the fan by shaking so that the dust may fall into the collection bins. Shaking is carried out by an electric motor which is automatically actuated when the fan is de-energised and has been allowed to run down and stop. The dust collection bins may be removed for emptying by simply releasing the quick release and pulling forward.

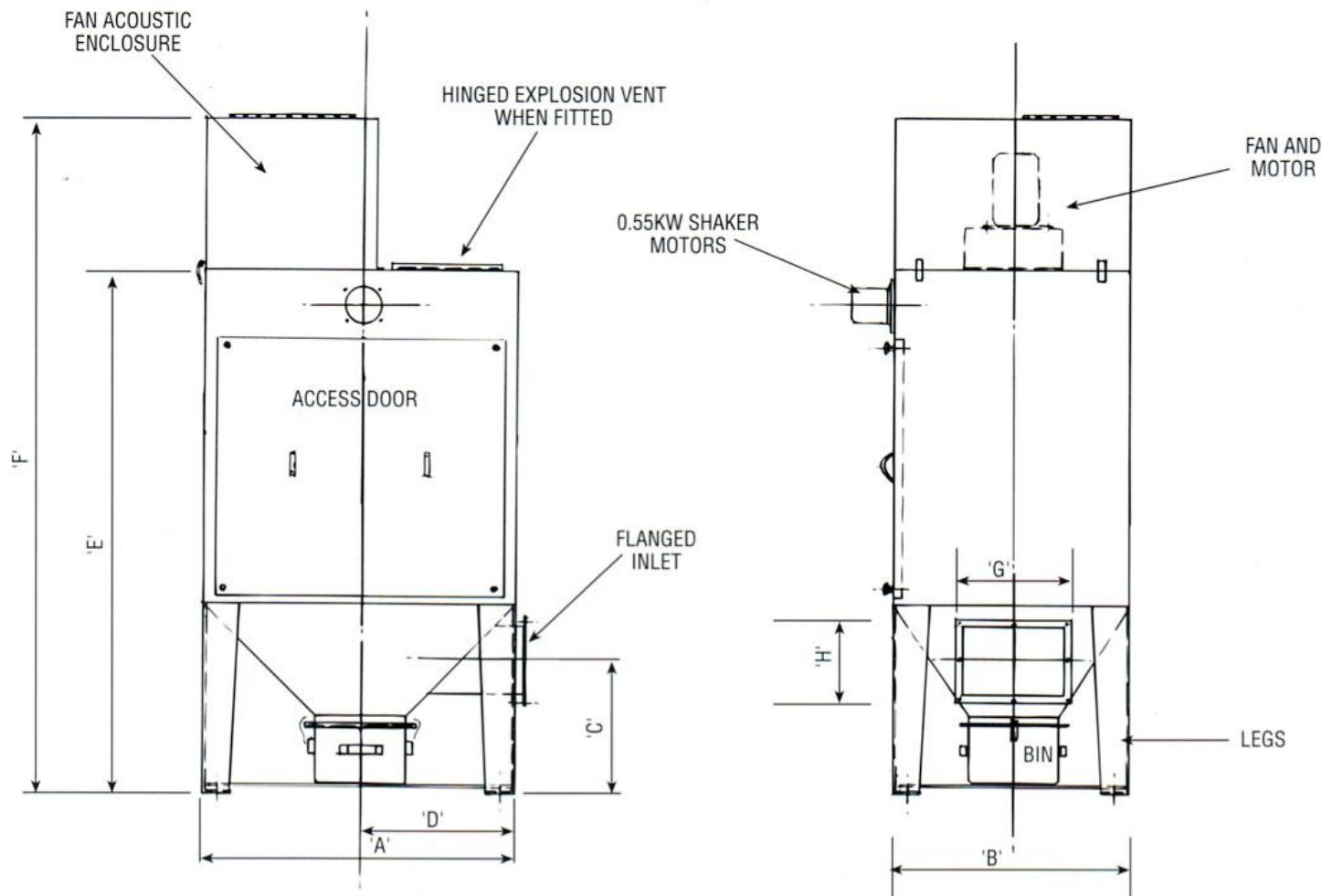
Access to the filter element and shaker mechanism for inspection and maintenance is through the large door on the front of the unit.

For most applications the fan is contained within an acoustic enclosure.

Various fan packages are available for each size of unit.

Secondary filter elements and enclosures are available.





ALL DIMENSIONS IN mm

UNIT SIZE	STANDARD FAN MOTOR	CLOTH AREA	AIR VOLUME 6 : 1	SHAKER MOTORS	'A'	'B'	'C'	'D'	'E'	'F'	'G'	'H'
FWB125	2.2KW	11.6m <sup>2</sup>	1268m <sup>3</sup> /h	0.55kw	632	784	610	356	2364	2864	305	152
FWB175	3.0KW	16.26m <sup>2</sup>	1775m <sup>3</sup> /h	0.55kw	632	1045	610	356	2364	2914	305	152
FWB250	4.0KW	23.2m <sup>2</sup>	2536m <sup>3</sup> /h	0.55kw	750	1045	610	415	2364	2964	305	228
FWB375	5.5KW	34.8m <sup>2</sup>	3804m <sup>3</sup> /h	0.55kw	1065	1045	610	572	2364	2964	305	228
FWB500	7.5KW	46.4m <sup>2</sup>	5072m <sup>3</sup> /h	0.55kw	1385	1045	610	732	2364	2964	457	305
FWB600	7.5KW	55.8m <sup>2</sup>	6084m <sup>3</sup> /h	0.55kw	1539	1045	762	810	2516	3516	457	305
FWB750	11.0KW	69.6m <sup>2</sup>	7608m <sup>3</sup> /h	2 x 0.55kw	2130	1045	686	1105	2516	3516	457	305
FWB1000	11.0KW	92.8m <sup>2</sup>	10140m <sup>3</sup> /h	2 x 0.55kw	2770	1045	686	1425	2516	3516	457	457
FWB1200	15.0KW	111.6m <sup>2</sup>	12168m <sup>3</sup> /h	2 x 0.55kw	3078	1045	762	1579	2516	3516	457	457



**SANGRE**

Environmental Services Ltd.